

# Set Up senseBox

## Content

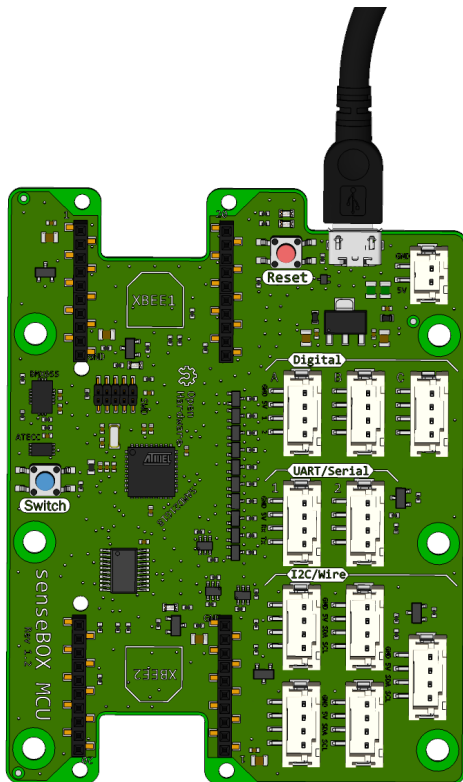
[> Home](#)

Content:

- [Connecting your senseBox](#)

## Connecting your senseBox

To connect the senseBox to your computer, simply connect it to your computer via a micro-USB cable.



The senseBox is now ready for use without any further precautions. Now get started creating your first program in the [Open Roberta Lab!](#)



In order to transfer programs to the senseBox, you have to set it to transfer mode by pressing the red reset button twice.

## Connections on the senseBox Microcontroller Unit (MCU)

